

2018  
Basecamp







Basecamp 16



Need trip ideas? Explore our favorite national parks.



Choose your own adventure.





# Welcome to Basecamp.

We can't define what adventure means to you, but we can help you get there. The Airstream Basecamp is the perfect launch pad for everything from extreme mountain biking to hardcore relaxation. Packed with creature comforts, loads of features, storage galore, thoughtful design and even a full wet bath – the Basecamp is your gateway to the remote trailhead or peaceful lakeside of your dreams. You don't even need a full-size truck or SUV to get there, so what are you waiting for?











River Rock Interior





The 2018 Airstream Basecamp is a sturdy, hypnotically beautiful escape pod packed with everything you need to live in complete comfort – whether you're off the grid, at a family campground or in a friend's backyard.



Red Rock Interior

*Eggs with bacon and a side of landscape.*





*The pass through water access makes a handy unisex/unisport outdoor shower.*



Warm Stone Interior

You're gonna need  
a bigger weekend.











See how we're built to last.

Built like a tank.  
Moves like  
an Airstream.







*Full bed sleeping option – 76 in. x 76 in.*



*Half bed sleeping option – 38 in. x 76 in.*



*Bench storage – 11.5 cubic feet*



*Group seating option – U-lounge seating for 5*



# Floorplans and Interiors

View our Interactive Basecamp floorplan.



## Red Rock Interior



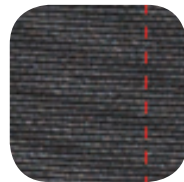
Flooring



Accent Laminate



Main Laminate



Seating



Cargo Bar

## River Rock Interior



Flooring



Accent Laminate



Main Laminate



Seating



Cargo Bar





## Warm Stone Interior



Flooring



Accent Laminate



Main Laminate



Seating



Cargo Bar



*The full wet bath takes the sting (and stink) out of remote adventures.*



## Basecamp Specifications

16

Exterior Length	16 ft. 3 in.
Exterior Width	7 ft.
Interior Width	6 ft. 4.5 in.
Exterior Height with A/C	8 ft. 8.75 in.
Exterior Height without A/C	8 ft. 7.5 in.
Interior Height with A/C (Entry Area)	6 ft. 3.5 in.
Hitch Weight (with LP & Batteries)	410
Unit Base Weight (with LP & Batteries)	2,585
Maximum Trailer Capacity (GVWR) (lbs.)	3,500
Net Carrying Capacity (lbs.)	915
Fresh Water Tank (gal.)	22
Gray Water Tank (gal.)	—
Black Water Tank (gal.)	29 (Combo)
30 AMP Service Single A/C with Heat Strip (9,200 BTU)	OPT
Truma Combi™ Eco Plus Heating System (14,300 BTU)	STD
Refrigerator	2-way 3 cu. ft.
Interior Windows and Skylights	8
Microwave	OPT
Sleeping Capacity	Up to 2



**Keep the bugs out and the gear close with optional patio and rear tents.**

## Exterior Features

Semi-Monocoque Aluminum Superstructure	STD
Fluorocarbon Treated UV Protected Aluminum Exterior	STD
Thermal Barrier Protection Between Interior and Exterior	STD
Hand Crafted Welded Extruded Aluminum Window Frames	STD
Tempered Tinted Windows w/ Rear Venting Windows	STD
LP (2 – 20 lb. Steel Tanks) w/ auto 2-stage regulator	STD
Molded Plastic LP Cover w/ Storage Tray	STD
1 Deep Cycle Battery (lead acid) Group 24 w/ Converter	STD
Exterior LP Quick Connect Service Port	STD
3M® Film Front Stone Guard Protection	STD
Exterior Shower w/ Hot & Cold Water	STD
Lockable Fresh Water Tank Inlet	STD
City Water Inlet w/ Water Pressure Regulator	STD
Hand Painted Chassis	STD
Torsion Axle Suspension	STD
Manual Hitch Jack	STD
2 Manual Stabilizer Jacks	STD
Goodyear® ST255/55R18 Tires, Balanced	STD
Stylized Aluminum Wheels	STD
Nev-R-Adjust® Brakes	STD
Spare Tire	STD
Solar Pre-wire (2 Rooftop & 1 Front Access Points)	STD
160w Solar Package w/ Upgraded AGM Battery	OPT
Dedicated Sewer Hose Storage	STD
Custom Handcrafted Wide Entry Door w/ Window	STD
Aluminum Entry Door Handle	STD
Unique Front Door Key w/ Heavy Duty Deadbolt	STD
Steel Entry Step	STD
LED Entrance Light	STD
LED Tank Service Light	STD
Cast Aluminum LED Taillights	STD
License Plate Bracket with LED Light	STD
Enclosed Aluminum Insulated Heated Underbelly	STD



## Interior Features

Complete Aluminum Interior Walls and Ceiling	STD
Fantastic® Fan	STD
Probeless Tank Monitoring System	STD
EcoBatt™ Insulation	STD
5/8 in. WBP Tongue-and-Groove Wood Floor	STD
Anti-wicking Outside Edge Floor Sealant	STD
Sliding Screen Front Door and Removable Rear Screen	STD
Panoramic Front Windows with Blackout Shades	STD
Handcrafted Italian Lite-Ply® Laminated Interior Cabinetry	STD
Seamless Vinyl Flooring	STD
LED Interior Lighting	STD
Overhead Storage	STD
Electric/LP Water Heater – Truma Combi™ Eco Plus	STD
Coat & Key Hooks	STD
Tie Down Hooks	STD

## Galley, Dinette and Lounge Features

2 Burner Cooktop (LP Gas)	STD
Laminate Galley Top	STD
Stainless Steel Sink w/ Integrated Cover	STD
2 Movable Laminate Table Tops with Aluminum Pedestals	STD
2 Additional Short Aluminum Pedestals for Bed Conversion	STD
Performance Fabric Cushions	STD
Convertible Lounge, Storage and Sleeping Accommodations	STD
Flatware Organizer	STD
Blackout Curtain(s)	STD
Pop Up USB and 110 Outlets	STD

## Bedroom Features

Cargo LED Light	STD
Under Bed Storage	STD
Blackout Curtain(s)	STD
USB Ports	STD

## Bathroom Features

Removable Hand Held Shower Head w/ Shutoff	STD
Porcelain Toilet	STD
Roof Vent/Fan	STD
Towel Bar/Hooks	STD
Retractable Clothes Line in Shower	STD


## Additional Features

Fully Enclosed Patio Tent (180 in. w x 72 in. d x 93 in. h) – Parts Dept.	OPT
Fully Enclosed Rear Tent (72 in. w x 72 in. d x 82 in. h) – Parts Dept.	OPT
Slide In Visor Patio Awning – Parts Dept.	OPT
Airstream Logo Entrance Mat	STD
Fire Extinguisher	STD
LP, Smoke & Carbon Monoxide Detectors	STD
12v Tank Heaters (In Addition To Heated Underbelly)	STD
Winterization Bypass Valve	STD
Secondary Battery Storage	STD
TRA Certification™ Green: Emerald Status (Highest Rating)	STD
2 Year Airstream Limited Warranty (Transferable)	STD
2 Year 24/7 Coach-Net® Roadside Assistance	STD
A/C Condensation Drain at Ground Level	STD



# It's Time To Live Riveted.

Airstreams are built to go places — to withstand the test of time with enduring quality, design and integrity. Since the first Airstream was riveted together in 1932, we've helped our customers explore a world of new experiences in comfort and luxury. This journey can take you anywhere, but there's only one way to get there — in an Airstream of your own.

 Find your dealer and find your Basecamp.



## The Airstream Travel Trailer Fleet



419 West Pike Street  
P.O. Box 629  
Jackson Center, OH  
45334 USA

937-596-6111  
[www.airstream.com](http://www.airstream.com)

Product information, specifications, and photography in this brochure were as accurate as possible at time of printing. Photographs may contain some features that are optional on your vehicle. Since we continually strive to improve our products, actual products may differ. Prices and specifications are subject to change without notice. All capacities are approximate and dimensions are nominal. Some features or options may be different or unavailable in other countries.

Warning — This information is intended as a guide only. Weights of individual vehicles may vary. Consult your owner's manual for complete loading, weighing, and towing instructions. Do not overload the travel trailer.

AIRSTREAM® and all related model names, slogans, logos and trademarks used herein are owned or used under license by Airstream, Inc. Patent pending.

All content and images  
© Airstream 2017 & 2018

BC 25k 4/17